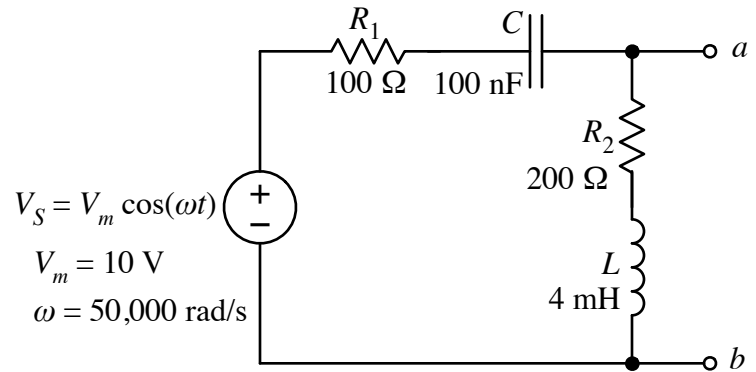


Find the Thevenin equivalent of the circuit at right. Express the equivalent in magnitude / phase form.

Sketch the Thevenin equivalent with the correct value of inductor or capacitor for the reactance of the equivalent impedance.



$\tilde{V}_{Th} =$  \_\_\_\_\_ ;  $Z_{Th} =$  \_\_\_\_\_